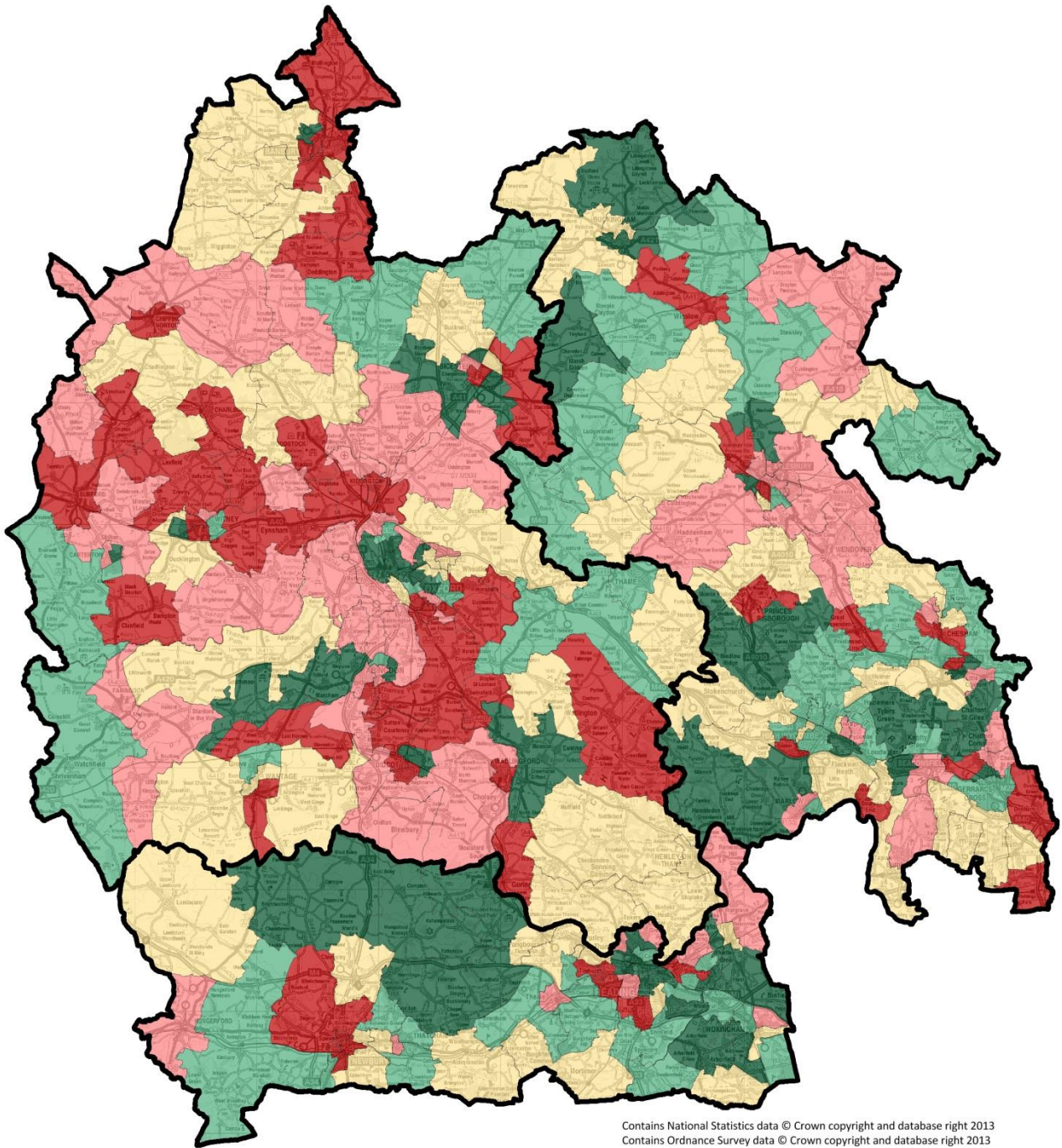


# Limiting Long Term Illness or Disability



Contains National Statistics data © Crown copyright and database right 2013  
Contains Ordnance Survey data © Crown copyright and database right 2013

Produced by Buckinghamshire Public Health (publichealth@buckscc.gov.uk), 03May17

## LLTI or Disability by Ward, % Population-weighted quintiles

Q1: 73.4 - 89.7
Q2: 67.2 - 73.3
Q3: 60.2 - 66.8
Q4: 53.5 - 60.0
Q5: 33.0 - 53.3

Population-weighted quintile estimates from ward-level data in Local Health.

Quintile thresholds are adjusted to include all wards with tied indicator values. Wards are allocated to the 'better' quintile.

## Limiting long term illness or disability

The worst quintile in BOB includes 59 wards (out of 293 wards with recorded data), and makes up 20.1% of the total population. Buckinghamshire has 12 wards in the worst quintile, and the worst ward in BOB, and these are;

- Booker and Cressex (**293**) – worst ranked in BOB
- The Risboroughs (291)
- Denham (287)
- Great Missenden (282)
- Winslow (279)
- St Mary's and Waterside (278)
- Southcourt (277)
- Amersham-on-the-Hill (266)
- Gold Hill (265)
- Bourne End-cum-Hedsor (249)
- Iver Village & Richings Park (246)
- Riverside (241)

[Rank in brackets, where 293 is worst in BOB]

The population in each quintile, for this indicator, is as follows;

Quintile	Population	#Wards
Q1	334,715	55
Q2	335,562	57
Q3	333,906	65
Q4	329,838	57
Q5	336,071	59
Total	1,670,092	293

For this indicator 104,523 people in Bucks are in quintile 5 (31% of the quintile); this is as expected.

### Notes on the indicator

No wards in BOB were suppressed for this indicator.

*Methodology/Suppression:* No suppression required. The overall indicator was calculated by aggregating 'activities limited a little' and 'a lot' categories. Limiting long term illness calculated by aggregating up Output Area data.

*Definition:* Number of people in the 2011 Census who reported that their day-to-day activities were limited because of a health problem or disability which has lasted, or is expected to last, at least 12 months. Reported as a percentage of the total number of respondents to the question.

*Source:* ONS 2011 Census downloaded from NOMIS standard tables (QS303EW).